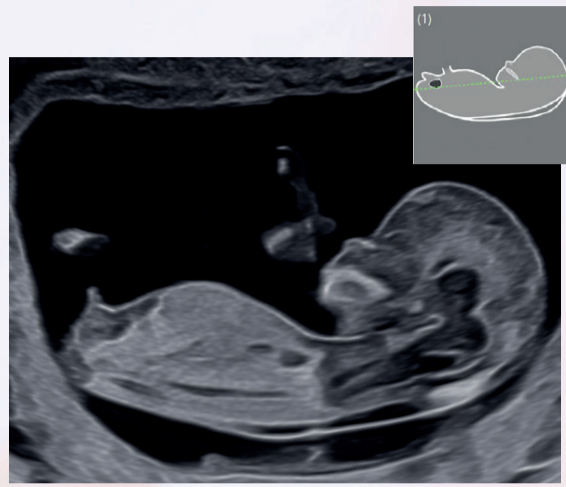
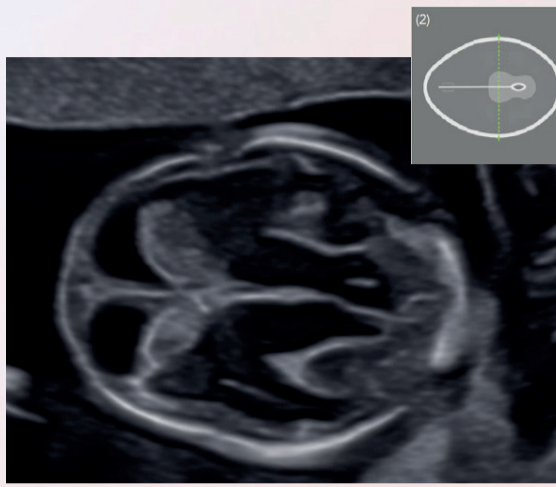


Iconographie recommandée par la CNEOF

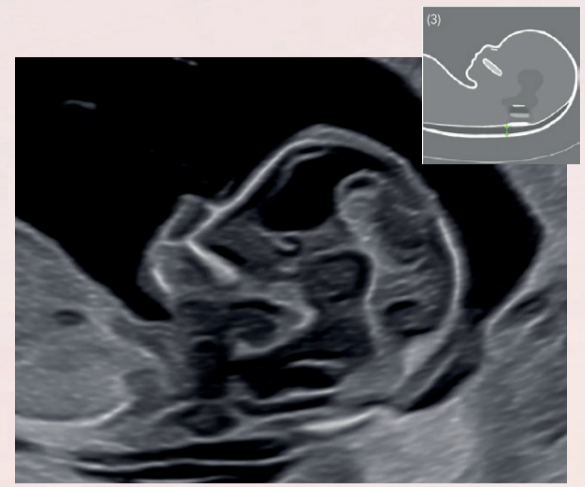
Trimestre 1



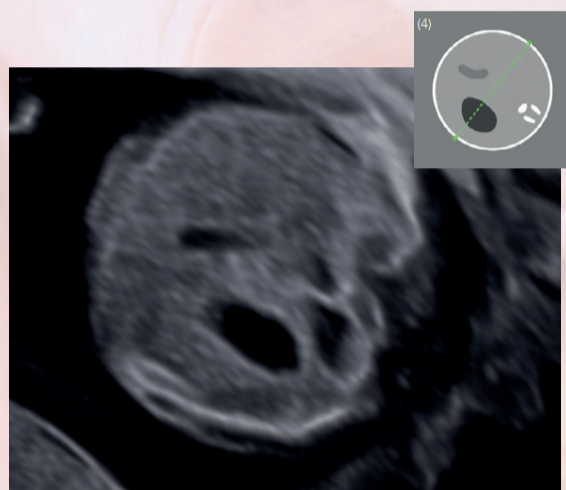
LCC



BIP PC



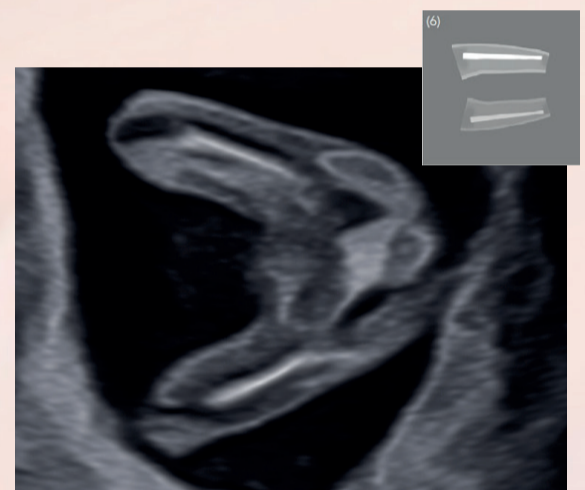
Clarté nucale



Abdomen



Cœur



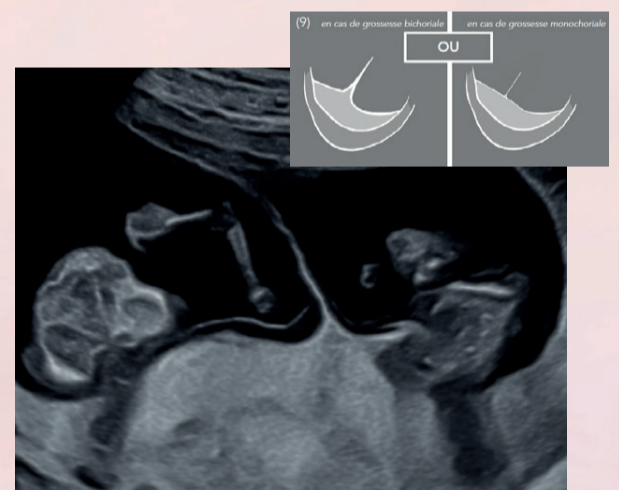
2 fémurs



Membres inférieurs

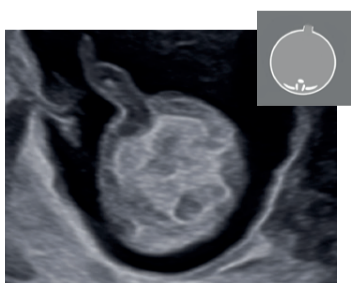


Membres supérieurs

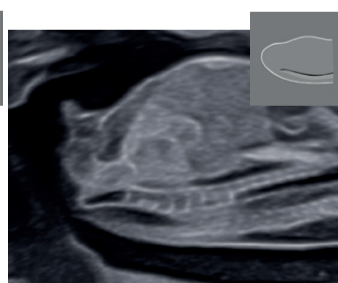


Chorionicité

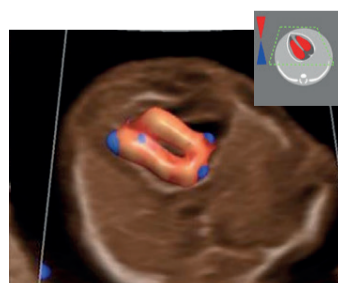
Images Complémentaires



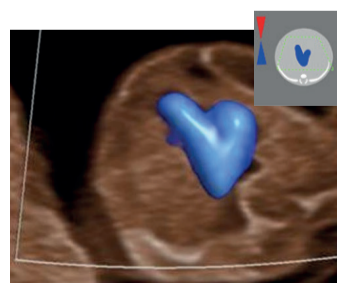
Insertion du cordon



Rachis



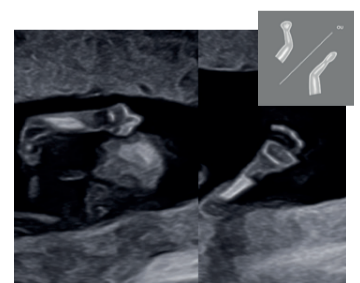
4 cavités cardiaques



Coupe des crosses



3 segments inférieurs



3 segments supérieurs